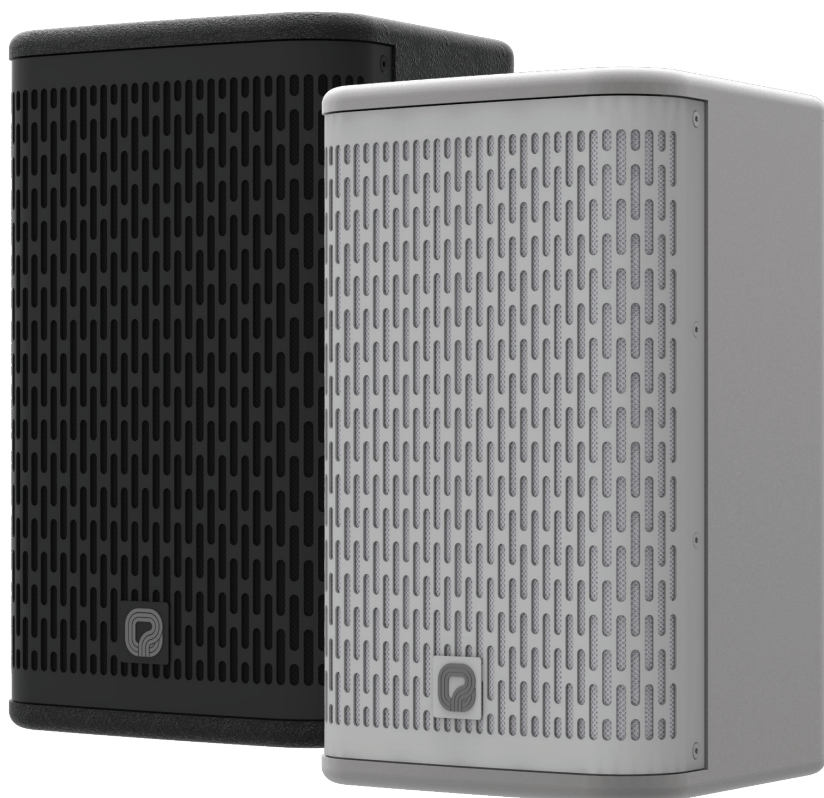


ALTAVOCES

Caja acústica de alta potencia

BS-208 170 W 8 ohm negro - **BS-208W** 170 W 8 ohm blanco

Caja acústica construida con madera contrachapada de abedul, con crossover pasivo, transductor de alta calidad de 8" y driver Kapton de 1" de alta sensibilidad y mínima distorsión que consigue una claridad elevada sin asperezas en alta frecuencia. Conectores Euroblock y NL4 dobles (entrada y enlace) para mayor facilidad de conexión. Soporte tipo U incluido. Disponible en versión de 100 W / 100 V (ref. BS-208T y BS-208WT).

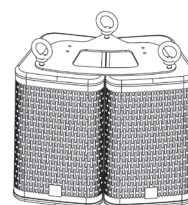


Otras opciones de montaje



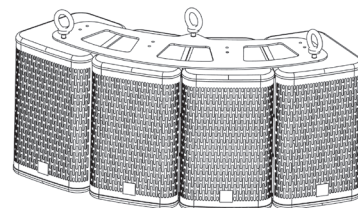
SG-BS208
SG-BS208W

Soporte giratorio, disponible en blanco o negro



C2-BS208
C4-BS208

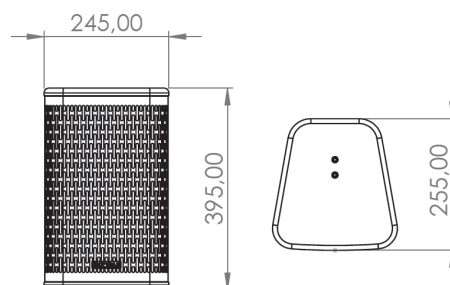
Pletinas para montaje en cluster de 2 ó 4 altavoces.



Especificaciones técnicas

Tipo	caja acústica de dos vías
Recinto	trapezoidal bass reflex
Potencia	170 W RMS / 340 W programa
Respuesta en frecuencia	70 - 18.000 Hz
Impedancia	8 Ω
Transductores	8" woofer + 1" tweeter Kapton driver
Dispersión	60° (H) x 40° (V)
Frecuencia de cruce	2.200 Hz
SPL máximo (pico)	118 dB @ 1m
Conectores	2x NL4MP speakon + Euroblock
Acabado	chapa de abedul 12 mm + rejilla metálica, negro
Color	negro (BS-208) o blanco (BS-208W)
Soporte	tipo U (incluido) o tipo giratorio (opcional)
Dimensiones (mm)	245 (ancho) x 255 (fondo) x 395 (alto)
Peso	8 kg

Dimensiones



LOUDSPEAKERS

High power two-way speaker

BS-208 170 W 8 ohm black - **BS-208W** 170 W 8 ohm white

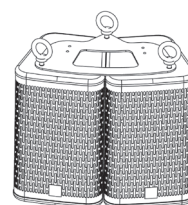
2-way speaker made of birch plywood, with a passive crossover, high-quality 8" transducer and 1" Kapton driver with high sensitivity and lower distortion for outstanding detail and clarity in high frequencies without harshness. Dual Euroblock and NL4 connectors (input and link) for easy connection. U-type bracket included. Also available in 100 W / 100 V version (ref. BS-208T and BS-208WT).



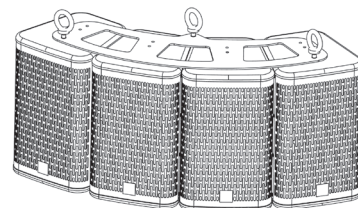
Other mounting options



SG-BS208
SG-BS208W
Swivel bracket, available in black or white



C2-BS208
C4-BS208
Platen for cluster installation of 2 or 4 loudspeakers.



Technical specifications

Type	2-way speaker
Enclosure	trapezoidal bass reflex
Power	170 W RMS / 340 W program
Frequency response	70 - 18,000 Hz
Impedance	8 Ω
Transducers	8" woofer + 1" tweeter Kapton driver
Dispersion	60° (H) x 40° (V)
Crossover frequency	2,200 Hz
max SPL (peak)	118 dB @ 1m
Connectors	2x NL4MP speakon + Euroblock
Finish	birch plywood 12 mm + metallic grille
Colour	black (BS-208) or white (BS-208W)
Support	U type (included) or swivel bracket (option)
Dimensions (mm)	245 (width) x 255 (depth) x 385 (high)
Weight	8 kg

Dimensions

