



Simply Better Connections

CS1942DP / CS1944DP

2/4-Port USB 3.0 4K DisplayPort
Dual Display KVM™ Switch
User Manual

Compliance Statements

FEDERAL COMMUNICATIONS COMMISSION INTERFERENCE STATEMENT

This equipment has been tested and found to comply with the limits for a Class B digital service, pursuant to Part 15 of the FCC rules. These limits are designed to provide reasonable protection against harmful interference in a residential installation. Any changes or modifications made to this equipment may void the user's authority to operate this equipment. This equipment generates, uses, and can radiate radio frequency energy. If not installed and used in accordance with the instructions, may cause harmful interference to radio communications. However, there is no guarantee that interference will not occur in a particular installation. If this equipment does cause harmful interference to radio or television reception, which can be determined by turning the equipment off and on, the user is encouraged to try to correct the interference by one or more of the following measures:

- ◆ Reorient or relocate the receiving antenna.
- ◆ Increase the separation between the equipment and receiver.
- ◆ Connect the equipment into an outlet on a circuit different from that to which the receiver is connected.
- ◆ Consult the dealer or an experienced radio/TV technician for help.

The device complies with Part 15 of the FCC Rules. Operation is subject to the following two conditions: (1) this device may not cause harmful interference, and (2) this device must accept any interference received, including interference that may cause undesired operation.

FCC Caution: Any changes or modifications not expressly approved by the party responsible for compliance could void the user's authority to operate this equipment.



KCC Statement

유선 제품용 / B 급 기기 (가정용 방송 통신 기기)
 이 기기는 가정용 (B 급) 전자파적합기기로서 주로 가정에서 사용하는
 것을 목적으로 하며, 모든 지역에서 사용할 수 있습니다.

Industry Canada Statement

This Class B digital apparatus complies with Canadian ICES-003.

CAN ICES-003 (B) / NMB-003 (B)

RoHS

This product is RoHS compliant.

User Information

Online Registration

Be sure to register your product at our online support center:

| | |
|---------------|---|
| International | http://eservice.aten.com |
|---------------|---|

Telephone Support

For telephone support, call this number:

| | |
|---------------|---|
| International | 886-2-8692-6959 |
| China | 86-400-810-0-810 |
| Japan | 81-3-5615-5811 |
| Korea | 82-2-467-6789 |
| North America | 1-888-999-ATEN ext 4988 1-949-428-1111 |

User Notice

All information, documentation, and specifications contained in this manual are subject to change without prior notification by the manufacturer. The manufacturer makes no representations or warranties, either expressed or implied, with respect to the contents hereof and specifically disclaims any warranties as to merchantability or fitness for any particular purpose. Any of the manufacturer's software described in this manual is sold or licensed *as is*. Should the programs prove defective following their purchase, the buyer (and not the manufacturer, its distributor, or its dealer), assumes the entire cost of all necessary servicing, repair and any incidental or consequential damages resulting from any defect in the software.

The manufacturer of this system is not responsible for any radio and/or TV interference caused by unauthorized modifications to this device. It is the responsibility of the user to correct such interference.

The manufacturer is not responsible for any damage incurred in the operation of this system if the correct operational voltage setting was not selected prior to operation. **PLEASE VERIFY THAT THE VOLTAGE SETTING IS CORRECT BEFORE USE.**

Product Information

For information about all ATEN products and how they can help you connect without limits, visit ATEN on the Web or contact an ATEN Authorized Reseller. Visit ATEN on the Web for a list of locations and telephone numbers:

| | |
|---------------|---|
| International | http://www.aten.com |
|---------------|---|

Package Contents

Check to make sure that all the components are in working order. If you encounter any problem, please contact your dealer.

The package consists of:

CS1942DP

- ◆ 1 2-Port USB 3.0 4K DisplayPort Dual Display KVMP™ Switch
- ◆ 4 DisplayPort 1.2 cables* (Certified)
- ◆ 2 USB 3.0 Cables
- ◆ 4 audio cables
- ◆ 1 power adapter
- ◆ 1 user instructions

CS1944DP

- ◆ 1 4-Port USB 3.0 4K DisplayPort Dual Display KVMP™ Switch
- ◆ 8 DisplayPort 1.2 cables* (Certified)
- ◆ 4 USB 3.0 cables
- ◆ 8 audio cables
- ◆ 1 power adapter
- ◆ 1 user instructions

Note: * 4K video resolution needs the high quality DisplayPort Cable.

Contents

| | |
|--|-----|
| Compliance Statements | ii |
| User Information | iv |
| Online Registration | iv |
| Telephone Support | iv |
| User Notice | iv |
| Product Information | v |
| Package Contents | vi |
| Contents | vii |
| About this Manual | ix |
| Conventions | x |
| | |
| 1. Introduction | |
| Overview | 1 |
| Features | 2 |
| Requirements | 4 |
| Console | 4 |
| Computers | 4 |
| Cables | 4 |
| Operating Systems | 5 |
| Components | 6 |
| CS1942DP Front View | 6 |
| CS1944DP Front View | 6 |
| CS1942DP Rear View | 8 |
| CS1944DP Rear View | 8 |
| | |
| 2. Hardware Setup | |
| Cable Connections | 11 |
| Installation Diagram | 13 |
| Quad-Display (DCC Mode) | 14 |
| Quad-Display Installation | 15 |
| | |
| 3. Basic Operation | |
| Port Switching | 17 |
| Manual Switching | 17 |
| Mouse Switching | 18 |
| Hotkey Switching | 18 |
| RS-232 Commands | 18 |
| Hot Plugging | 18 |
| Powering Off and Restarting | 18 |
| Port ID Numbering | 19 |
| Alternative Manual Port Selection Settings | 19 |
| | |
| 4. Hotkey Operation | |

| | |
|---|----|
| Hotkey Port Switching | 21 |
| Cycling Through the Ports | 22 |
| Going Directly to a Port | 23 |
| Auto Scanning | 25 |
| Hotkey Setting Mode | 26 |
| Invoking HSM | 26 |
| Alternate HSM Invocation Keys | 27 |
| Alternate Port Switching Keys | 27 |
| Keyboard Operating Platform | 28 |
| List Switch Settings | 28 |
| USB Reset | 28 |
| Hotkey Beeper Control | 29 |
| Port Switching Keys | 29 |
| Firmware Upgrade Mode | 29 |
| Restore Default Settings | 29 |
| Keyboard Emulation Control | 30 |
| Mouse Emulation Control | 30 |
| Mouse Port Switching | 30 |
| Monitor Re-detection | 30 |
| Switching Mode Selection | 31 |
| HSM Summary Table | 32 |

5. Keyboard Emulation

| | |
|------------------------|----|
| Mac Keyboard | 35 |
| Sun Keyboard | 36 |

6. The Firmware Upgrade Utility

| | |
|--------------------------------|----|
| Before You Begin | 37 |
| Starting the Upgrade | 39 |
| Upgrade Succeeded | 42 |
| Upgrade Failed | 43 |

7. Appendix

| | |
|---|----|
| Safety Instructions | 45 |
| Technical Support | 47 |
| International | 47 |
| North America | 47 |
| Specifications | 48 |
| Troubleshooting | 49 |
| Overview | 49 |
| ATEN Standard Warranty Policy | 51 |

About this Manual

This User Manual is provided to help you get the most from your CS1942DP / CS1944DP unit. It covers all aspects of installation, configuration and operation. An overview of the information found in the manual is provided below.

Chapter 1, Introduction, introduces you to the CS1942DP / CS1944DP. Its purpose, features and benefits are presented, and its front, side, and back panel components are described.

Chapter 2, Hardware Setup, describes how to set up your installation. The necessary steps are provided.

Chapter 3, Basic Operation, explains the fundamental concepts involved in operating the CS1942DP / CS1944DP.

Chapter 4, Hotkey Operation, details all of the concepts and procedures involved in the Hotkey operation of your CS1942DP / CS1944DP installation.

Chapter 5, Keyboard Emulation, provides tables that list the PC to Mac and PC to Sun keyboard emulation mappings.

Chapter 6, The Firmware Upgrade Utility, explains how to use the CS1942DP / CS1944DP's firmware with the latest available versions.


Appendix, which provides specifications and other technical information regarding the CS1942DP / CS1944DP.

Note:

- ◆ Read this manual thoroughly and follow the installation and operation procedures carefully to prevent any damage to the unit or any connected devices.
 - ◆ The product may be updated with features and functions added, improved or removed since the release of this manual. For an up-to-date user manual, visit <http://www.aten.com/global/en/>
-

Conventions

This manual uses the following conventions:

- | | |
|---|--|
| Monospaced | Indicates text that you should key in. |
| [] | Indicates keys you should press. For example, [Enter] means to press the Enter key. If keys need to be chorded, they appear together in the same bracket with a plus sign between them: [Ctrl+Alt]. |
| 1. | Numbered lists represent procedures with sequential steps. |
| ◆ | Bullet lists provide information, but do not involve sequential steps. |
| > | Indicates selecting the option (on a menu or dialog box, for example), that comes next. For example, Start > Run means to open the <i>Start</i> menu, and then select <i>Run</i> . |
|  | Indicates critical information. |

Chapter 1

Introduction

Overview

The CS1942DP / CS1944DP 2/4-Port USB 3.0 4K DisplayPort Dual Display KVMP™ Switch takes a giant leap forward in KVM switch functionality by combining a Dual Display KVM switch with a DisplayPort video interface, 2-port USB 3.1 Gen 1 hub and 2.1 channel audio support for rich bass in surround sound. DisplayPort technology provides a 4K UHD @ 60 Hz and 4K DCI @ 60Hz resolution that displays the most vivid high-definition images available while pumping out premium sound for music, movies, and games.

The CS1942DP / CS1944DP allows users to access two or four DisplayPort computers from a single USB keyboard, USB mouse and two DisplayPort monitors. In addition to the front panel pushbuttons, Hotkeys, and the mouse port-switching functionality, the CS1942DP / CS1944DP offers serial commands to help switch ports and configure device settings. A Power On Detection feature also ensures that if one computer is powered off, the CS1942DP / CS1944DP will automatically switch ports to the next powered-on computer.

With a built-in USB 3.1 Gen 1 hub, the CS1942DP / CS1944DP provides SuperSpeed 5 Gbps transfer rates to all connected USB peripherals. The unit's independent (asynchronous) switching feature, allows the KVM focus to be on one computer while the USB peripheral focus is on another computer. This eliminates the need to purchase a separate USB hub or stand-alone peripheral sharer – such as a print server, modem splitter, etc.

Featuring an unbeatable combination of ultra high 4K resolutions, a next generation USB 3.1 Gen 1 hub and enhanced, user-friendly operations, the CS1942DP / CS1944DP delivers the latest innovations in desktop KVM switching technology.

Features

- ◆ 2/4-port DisplayPort Dual Display KVM Switch with USB 3.1 Gen1 hub and 2.1 surround sound audio
- ◆ One USB keyboard, one USB mouse, and two DisplayPort monitors console controls two or four computers and share two USB peripherals
- ◆ Computer selection via front panel pushbuttons, Hotkeys, mouse¹, and serial commands²
- ◆ Independent switching of KVM, USB, and Audio focus
- ◆ Superior video quality – 4K UHD (3840 x 2160 @ 60 Hz) and 4K DCI (4096 x 2160 @ 60Hz)
- ◆ 2-port USB 3.1 Gen 1 hub with SuperSpeed 5 Gbps transfer rates
- ◆ DisplayPort 1.2 compliant³, HDCP compliant
- ◆ Supports HD audio through DisplayPort channel⁴
- ◆ Full bass response for high-quality 2.1 channel surround sound systems
- ◆ Power On Detection – if a computer is powered off, the CS1942DP / CS1944DP automatically switches to the next powered-on computer
- ◆ Multi-Stream Transport (MST) permits usage of multiple monitors through a single DisplayPort connector⁵
- ◆ DisplayPort Dual-Mode technology (DP++) supports passive HDMI and DVI adapters⁶
- ◆ Hot pluggable – add or remove computers without powering down the switch
- ◆ Mouse emulation/bypass feature supports most mouse drivers and multifunction mice
- ◆ Multi-platform support – Windows 2000, Windows XP, Windows Vista, Windows 7/8 and higher, Mac, and Linux
- ◆ Multilingual keyboard mapping supports English, Japanese, French and German keyboard emulation
- ◆ Mac keyboard support and emulation⁷
- ◆ Auto Scan Mode for monitoring all computers
- ◆ Firmware upgradeable

- Note:**
1. Mouse port switching is only supported under mouse emulation mode with a USB 3-button mouse wheel.
 2. Slide the DCC switch to the *s* position to allow the KVM switch to receive RS-232 commands via an RJ-45-to-DB9 cable. Please refer to the CS1942DP_CS1944DP RS-232 Commands document.
 3. For DisplayPort 1.4 compliant display device, make sure to configure the device setting to be compatible with DisplayPort 1.2 to avoid compatibility issue.
 4. HD audio through DisplayPort cannot be switched independently.
 5. MST (Multi-Stream Transport) requires either monitors capable of DisplayPort 1.2 daisy-chaining, or use of a powered DisplayPort MST Hub. A DisplayPort v1.1a display can be the last display in a DisplayPort v1.2 chain. The PC source must be DisplayPort 1.2 compliant.
 6. DisplayPort Dual-Mode technology (DP++) does not require an active adapter for most single display setups. Active DisplayPort adapters are recommended if you are unsure of the video source's DP++ compatibility.
 7. PC keyboard combinations emulate Mac keyboards. Mac keyboards only work with their own operating system.
-

Requirements

Console

- ◆ Two DisplayPort monitors capable of the highest possible resolution
- ◆ A USB mouse
- ◆ A USB keyboard
- ◆ Microphone and speakers

Computers

The following equipment must be available on each computer:

- ◆ Two DisplayPort ports
- ◆ Four DisplayPort ports for Quad-Display (DCC mode)
- ◆ A USB Type A port
- ◆ Audio ports

Cables

To guarantee video quality, we recommend using only ATEN DisplayPort KVM cables which are certified by the VESA Compliance Program. Four (CS1942DP) or eight (CS1944DP) cables are provided with this package.

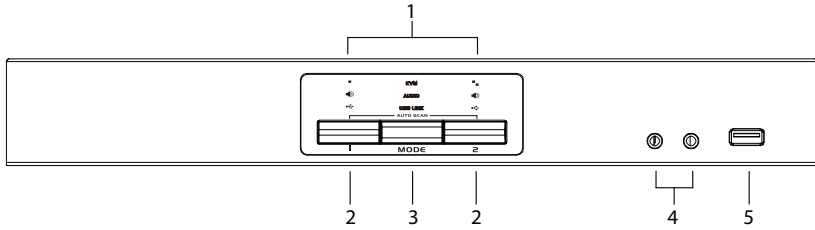
-
- Note:** 1. The quality of the display is affected by the quality of the cables. We recommend the total length from the source to the monitor to not exceed 3 meters (1.5 meters between the PC and the KVM switch. 1.5 meters between the KVM switch and the monitor). If you need additional cables, please contact your dealer to purchase ATEN approved cables.
2. If you are using DisplayPort cables that are only DP 1.1 compliant, make sure the DisplayPort setting of the monitor is set to auto or DP 1.1.
-

Operating Systems

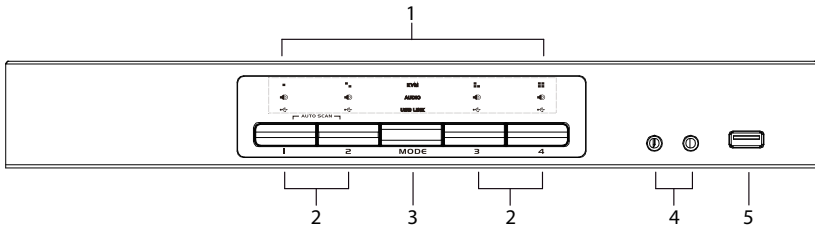
| OS | | Version |
|-----------|------------------------|---|
| Windows | | 2000 / XP / Vista / 7 / 8 / 8.1 / 10 or above |
| Linux | RedHat | 6.0 or later |
| | SuSE | 8.2 or later |
| | Mandriva (Mandrake) | 9.0 or later |
| Novell | Netware | 5.0 or later |
| Mac | | OS 9 or later |
| Dos | | 6.2 or later |

Components

CS1942DP Front View



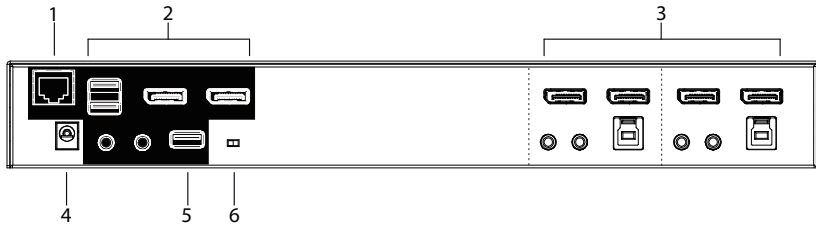
CS1944DP Front View



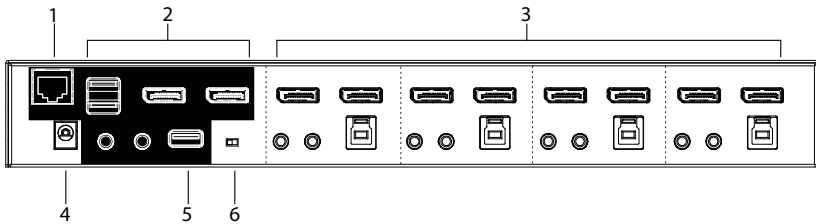
| No. | Component | Description |
|-----|----------------------------|---|
| 1 | LED status panel | This panel contains LED icons that light to indicate mode and port status. The Mode and Port Selection Pushbuttons have three corresponding LED icons that light to indicate status – KVM , Audio , and USB . |
| 2 | port selection pushbuttons | For manual port selection (see <i>Port Switching</i> , page 17): <ul style="list-style-type: none"> ◆ Press a switch for less than two seconds to bring the KVM, USB hub, and audio focus to the computer attached to its corresponding port. ◆ Press a port selection pushbutton twice to bring the audio focus to the computer attached to its corresponding port. ◆ Press a port selection pushbutton for longer than two seconds to bring only the KVM focus to the computer attached to its corresponding port. ◆ Press switches 1 and 2 simultaneously for 2 seconds to start Auto Scan Mode (see <i>Auto Scanning</i>, page 25). |
| 3 | mode selection pushbutton | <ul style="list-style-type: none"> ◆ This pushbutton allows you to cycle through the four focus modes – complete, KVM, audio, and USB. ◆ Press and hold mode selection pushbutton before powering on and to enter Firmware Upgrade Mode. |

| No. | Component | Description |
|------------|---------------------|--|
| 4 | console audio ports | Your console speakers and microphone plug in here. |
| 5 | USB 3.1 Gen 1 hub | USB peripherals (printers, scanners, drives etc.) plug into this port. This USB 3.1 Gen 1 port features 5 Gbps data transfer rates for compatible USB peripherals. |

CS1942DP Rear View



CS1944DP Rear View



| No. | Component | Description |
|-----|-----------------------------------|---|
| 1 | DCC port (Daisy Chain Control) | This RJ-45 port is used to connect two units together when setting up DCC mode for a quad-display mode. See <i>Quad-Display (DCC Mode)</i> , page 14 for instructions. |
| 2 | console port section | The cables from your keyboard, mouse, monitors, microphone, and speakers plug in here. Each connector is marked with an appropriate icon to indicate itself. |
| 3 | KVM port section | The cables that link the switch to your computers plug in here. Each KVM port section is comprised of a microphone jack, speaker jack, USB Type B socket and two DisplayPort connectors |
| 4 | power jack | The power adapter cable plugs into this jack. |
| 5 | USB 3.1 Gen 1 hub | USB peripherals (printers, scanners, drives etc.) plug into this port. This USB 3.1 Gen 1 port features 5 Gbps data transfer rates for compatible USB peripherals. |

| No. | Component | Description |
|-----|------------|--|
| 6 | DCC switch | <p>This switch is used to specify the <i>Host</i> and <i>Client</i> when setting up two units in Quad-Display DCC mode. See <i>Quad-Display (DCC Mode)</i>, page 14 for instructions.</p> <p>Slide the DCC switch to the <i>s</i> position to allow the KVM switch to receive RS-232 commands via an RJ-45-to-DB9 cable. Please refer to the CS1942DP/CS1944DP RS-232 Commands document.</p> |

This Page Intentionally Left Blank

Chapter 2

Hardware Setup



1. Important safety information regarding the placement of this device is provided on page 45. Please review it before proceeding.
2. To prevent damage to your installation from power surges or static electricity. It is important that all connected devices are properly grounded.
3. Make sure that power to all the devices you will be installing has been turned off. You must unplug the power cords of any computers that have the Keyboard Power On function.
4. Please operate the device with caution when under high environmental temperatures, as the surface of the device may become overheated under such conditions. For instance, the surface temperature of the device may reach 70 °C (158 °F) or higher when the environmental temperature reaches close 50 °C (122 °F).

Cable Connections

To set up your installation, refer to the installation diagram on the following page (the numbers in the diagram on page 13 correspond to the steps below), and do the following:

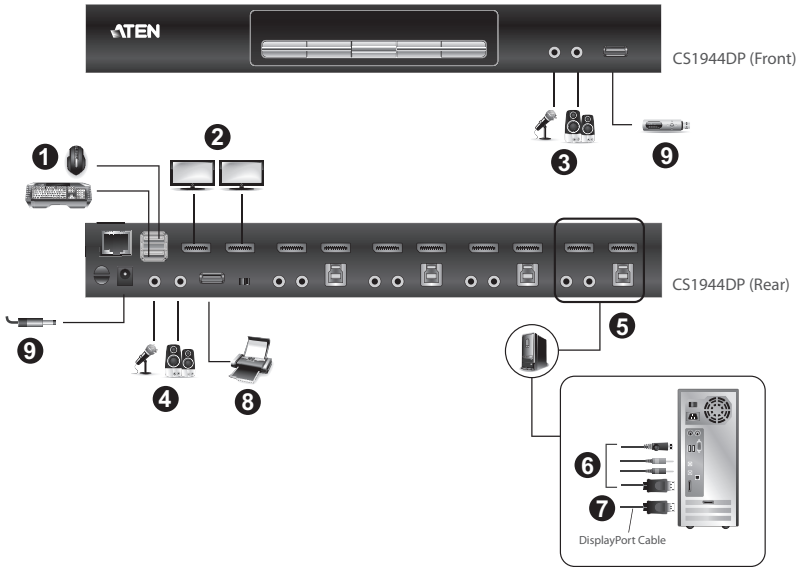
1. Plug the USB keyboard and USB mouse into the USB console ports located on the unit's rear panel.
2. Plug your console monitor(s) into the DisplayPort console ports located on the unit's rear panel and power on the monitors.
3. Plug your microphone and speakers into the console microphone and speaker jacks located on the unit's front panel. Audio cables are required on the CPU side for this connection to work.
4. Plug your microphone and speakers into the audio console ports located on the unit's rear panel. The microphone and speakers plugged into the front panel have priority over those plugged into the rear panel.

5. Using the DisplayPort cable, plug the DisplayPort connector into an available DisplayPort “A” socket on the KVM port section of the switch (CPU 1, CPU 2, etc.), then plug the USB 3.0 cable, microphone/speaker cables into their corresponding sockets. Using another DisplayPort cable, plug the DisplayPort cable connector into DisplayPort Socket B in the same KVM port section of the switch.
6. At the other end of the cables from step 4, plug the microphone/speaker cables into their respective ports on the computer.
7. At the other end of the DisplayPort cable and USB 3.0 cable from step 5, plug the DisplayPort cable into its respective port on the computer. Repeat steps 5, 6, and 7 for each dual screen PC system you are installing.
8. (Optional) Plug your USB peripherals into the front or rear USB peripheral ports.
9. Plug the power adapter that came with your switch into an AC power source, then plug the power adapter cable into the switch’s Power Jack.
10. Power on the computers.

Note: ♦ By default, the switch links to the first computer that is powered on.

- ♦ The total cable length from the PC to monitor (including KVM) cannot exceed 3 meters.
 - ♦ Choosing high quality cables helps to ensure that 4K UHD (3840x2160 @ 60 Hz) or 4K DCI (4096x2160 @ 60 Hz) resolutions can be reached.
 - ♦ We suggest that the CS1942DP / CS1944DP should be kept powered on.
 - ♦ Make sure the computers and devices that the CS1942DP / CS1944DP connects to are also properly grounded.
-

Installation Diagram



Quad-Display (DCC Mode)

To expand your installation to a Quad-Display display, you can use DCC Mode to connect two CS1942DP / CS1944DP units together, and use four displays in unison.

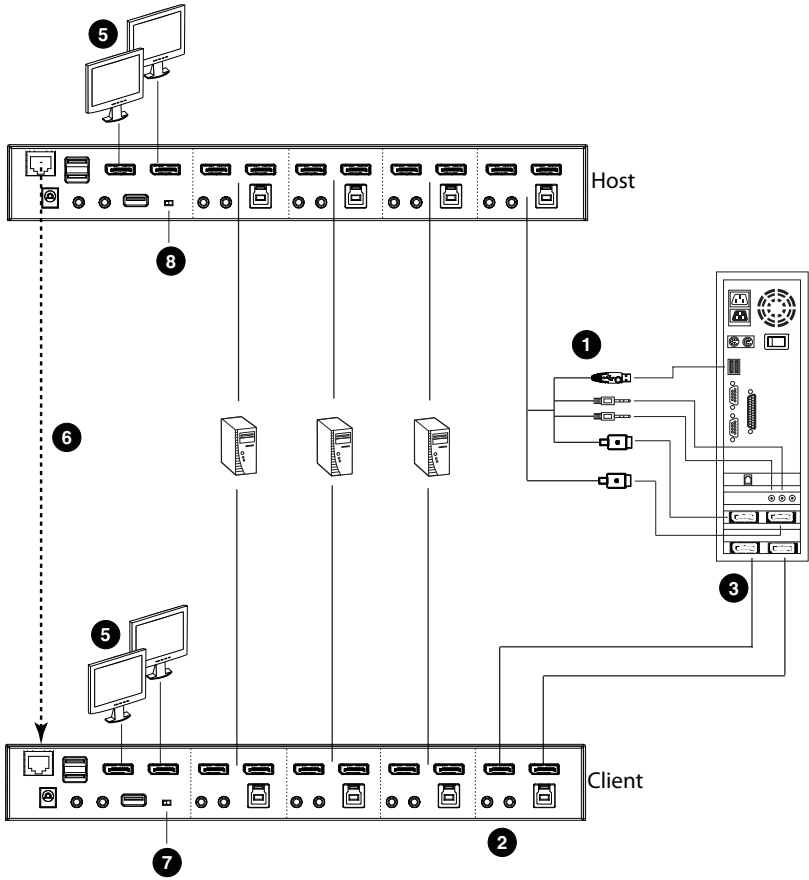
To set up DCC mode, power off all devices, refer to the installation diagram on the next page (the numbers in the diagram correspond to the steps, below), and do the following:

1. Connect all the computers to the *Host* as described in *Hardware Setup, Cable Connections*, page 11.
2. On the *Client*, using two DisplayPort cables, plug the DisplayPort connectors into the DisplayPort sockets A and B in the same KVM port section of the switch.
3. At the other end of the two DisplayPort cables, plug the monitor cable into the respective ports on the computer.
4. Repeat steps 2 and 3 for all computers.
5. Plug the console monitors into the DisplayPort console ports located on the *Host's* and *Client's* rear panel.
6. Use an RJ-45 cable to connect the DCC port of the *Host* to the DCC port of the *Client*.
7. On the rear of the *Client* set the DCC switch to **Secondary**.*
8. On the rear of the *Host* set the DCC switch to **Primary**.
9. Power up the installation: plug in the power cord for the *Host* and *Client*, then power on both. After both units are up, power on the computer/video source devices.

Note: ♦ P means Primary, and S means Secondary.

- ♦ In DCC mode, the *Client's* front panel pushbuttons are disabled, and it takes all commands directly from the *Host*.
 - ♦ Setting the DCC switch to the *S* position will disable all front panel pushbuttons on that switch.
 - ♦ Make sure the computers and devices that the CS1942DP / CS1944DP connects to are also properly grounded.
-

Quad-Display Installation



This Page Intentionally Left Blank

Chapter 3

Basic Operation

Port Switching

There are four convenient methods to switch between the computers: Manual – by pressing the port selection pushbuttons on the front panel, Mouse – by clicking the scroll wheel of the mouse, Hotkey – by entering combinations on the keyboard, and RS-232 Commands – by entering the correct command and control.

Manual Switching

For manual port selection:

- ◆ To bring complete focus (**audio, KVM, and USB**) to a computer, *either*, a) press the port selection pushbutton that corresponds to that computer; *or* b) press the Mode pushbutton **once** (the Mode pushbutton's three icons light up) and then press the port selection pushbutton that corresponds to that computer. All three port icons light up.
- ◆ To bring only the **KVM** focus to a computer, press the Mode pushbutton **twice** (the Mode pushbutton's KVM icon lights up), and then press the port selection pushbutton that corresponds to that computer. The port's KVM icon (the port number) lights up.
- ◆ To bring only the **audio** focus to a computer, press the Mode pushbutton **three times** (the Mode pushbutton's audio icon lights up), and then press the port selection pushbutton that corresponds to that computer. The port's audio icon lights up.
- ◆ To bring only the **USB** focus to a computer, press the Mode pushbutton **four times** (the Mode pushbutton's USB icon lights up), and then press the port selection pushbutton that corresponds to that computer. The port's USB icon lights up.
- ◆ Press and hold port selection pushbuttons 1 and 2 simultaneously for two seconds to start Auto Scan mode.

Note: 1. Press and release either port selection pushbutton to stop Auto Scan Mode. The KVM focus goes to the computer attached to the corresponding port of the pushbutton you pressed.

2. If a port is not selected within five seconds of pushing the Mode pushbutton, the Mode pushbutton will power off.

Mouse Switching

For mouse port selection: Double-click the scroll wheel of your USB mouse to cycle through the ports.

-
- Note:**
1. Mouse switching is only supported by USB 3-key scroll wheel mice.
 2. Mouse switching is disabled by default. See *Hotkey Setting Mode*, page 26, to enable mouse switching.
 3. Mouse switching is only supported when Mouse Emulation is enabled.
-

Hotkey Switching

For Hotkey port selection: All port switches from the keyboard begin by pressing the Scroll Lock key twice. Regarding details of the Hotkey parameters, see *Hotkey Operation*, page 21.

RS-232 Commands

For RS-232 port selection: Enter the correct command and control to switch port. Regarding details of the RS-232 command and control, please refer to the *CS1942DP-CS1944DP RS-232 Command User Manual*.

Hot Plugging

The CS1942DP / CS1944DP supports USB hot plugging – components can be removed and added back into the installation by unplugging their cables from the USB hub ports without the need to shut the unit down.

Powering Off and Restarting

If it becomes necessary to Power Off the CS1942DP / CS1944DP unit, before starting it back up, you must do the following:

1. Shut down all the computers that are attached to the switch.
2. Unplug the switch's power adapter cable.
3. Wait 10 seconds, then plug the switch's power adapter cable back in.
4. Once the switch is powered up, power on the computers.

Port ID Numbering

Each KVM port section on the CS1942DP / CS1944DP switch is assigned a port number. (1 or 2 for the CS1942DP; 1 to 4 for the CS1944DP). The port numbers are marked on the rear panel of the switch (see page 8 for details).

The Port ID of a computer is derived from the KVM port number it is connected to. For example, a computer connected to KVM port 2 has a Port ID of 2.

The Port ID is used to specify which computer gets the KVM, USB peripheral, and audio focus with the Hotkey port selection method (see page 23 for details).

Alternative Manual Port Selection Settings

When Hotkey Setting Mode has been activated, pressing [S] will invoke the alternative front panel pushbutton manual port selection functions, as explained below:

- ◆ Press a port selection pushbutton once to bring only the KVM focus to the computer attached to its corresponding port.
- ◆ Press a port selection pushbutton twice to bring the audio focus to the computer attached to its corresponding port.
- ◆ Press and hold a port selection pushbutton for more than 2 seconds to bring the KVM, audio and USB focus to the computer attached to its corresponding port.
- ◆ Press and hold port selection pushbuttons 1 and 2 for more than 2 seconds to start Auto Scan Mode, see page 25 for details.

This Page Intentionally Left Blank

Chapter 4

Hotkey Operation

The CS1942DP / CS1944DP provides an extensive, easy-to-use, Hotkey function that makes it convenient to control and configure your KVM installation from the keyboard. Hotkeys provide asynchronous (independent) switching of the KVM, USB hub and audio focus. If you wish, you can give one computer the KVM console focus, another the USB hub focus and the other two the audio focus.

Hotkey Port Switching

All port switches begin with tapping the **[Scroll Lock]** key twice. The tables below describe the actions that each combination performs.

Note: If using the Scroll Lock key conflicts with other programs running on the computer, the **[Ctrl]** key can be used, instead. See *Alternate Port Switching Keys*, page 27, for details.

Cycling Through the Ports

| Hotkey | Action |
|--|--|
| [Scroll Lock] [Scroll Lock] [Enter] | <p>Brings the KVM, USB hub, and audio focus from the port that currently has the KVM focus to the next port on the installation (1 to 2; 2 to 1 for the CS1942DP: 1 to 2; 2 to 3; 3 to 4; 4 to 1 for the CS1944DP).</p> <p>Example:</p> <ol style="list-style-type: none"> 1. Press [Scroll Lock] twice. 2. Press [Enter]. |
| [Scroll Lock] [Scroll Lock] [K] [Enter] | <p>Brings only the KVM focus from the port that currently has it to the next port on the installation. The USB and audio focus remain where they are.</p> <p>Example:</p> <ol style="list-style-type: none"> 1. Press [Scroll Lock] twice. 2. Press [K]. 3. Press [Enter]. |
| [Scroll Lock] [Scroll Lock] [U] [Enter] | <p>Brings only the USB hub focus from the port that currently has it to the next port on the installation. The KVM and audio focus remain where they are.</p> <p>Example:</p> <ol style="list-style-type: none"> 1. Press [Scroll Lock] twice. 2. Press [U]. 3. Press [Enter]. |
| [Scroll Lock] [Scroll Lock] [S] [Enter] | <p>Brings only the audio focus from the port that currently has it to the next port on the installation. The KVM and USB hub focus remain where they are.</p> <p>Example:</p> <ol style="list-style-type: none"> 1. Press [Scroll Lock] twice. 2. Press [S]. 3. Press [Enter]. |

Going Directly to a Port

| Hotkey | Action |
|--|--|
| [Scroll Lock] [Scroll Lock] [n] [Enter] | <p>Brings the KVM, USB hub, and audio focus to the computer attached to the port corresponding to the specified Port ID.</p> <p>Example:</p> <ol style="list-style-type: none"> 1. Press [Scroll Lock] twice. 2. Press [2]. 3. Press [Enter]. |
| [Scroll Lock] [Scroll Lock] [n] [K] [Enter] | <p>Brings only the KVM focus to the computer attached to the specified port. The USB hub and audio focus remain where they are.</p> <p>Example:</p> <ol style="list-style-type: none"> 1. Press [Scroll Lock] twice. 2. Press [2]. 3. Press [K]. 4. Press [Enter]. |
| [Scroll Lock] [Scroll Lock] [n] [U] [Enter] | <p>Brings only the USB hub focus to the computer attached to the specified port. The KVM and audio focus remain where they are.</p> <p>Example:</p> <ol style="list-style-type: none"> 1. Press [Scroll Lock] twice. 2. Press [2]. 3. Press [U]. 4. Press [Enter]. |
| [Scroll Lock] [Scroll Lock] [n] [S] [Enter] | <p>Brings only the audio focus to the computer attached to the specified port. The KVM and USB hub focus remain where they are.</p> <p>Example:</p> <ol style="list-style-type: none"> 1. Press [Scroll Lock] twice. 2. Press [2]. 3. Press [S]. 4. Press [Enter]. |

| Hotkey | Action |
|--|---|
| [Scroll Lock] [Scroll Lock] [n] [K] [U] [Enter] | <p>Brings the KVM and USB hub focus to the computer attached to the specified port. The audio focus remains where it is.</p> <p>Example:</p> <ol style="list-style-type: none"> 1. Press [Scroll Lock] twice. 2. Press [2]. 3. Press [K], and then press [U]. 4. Press [Enter]. |
| [Scroll Lock] [Scroll Lock] [n] [K] [S] [Enter] | <p>Brings the KVM and audio focus to the computer attached to the specified port. The USB hub focus remains where it is.</p> <p>Example:</p> <ol style="list-style-type: none"> 1. Press [Scroll Lock] twice. 2. Press [2]. 3. Press [K], and then press [S]. 4. Press [Enter]. |
| [Scroll Lock] [Scroll Lock] [n] [U] [S] [Enter] | <p>Brings the USB hub and audio focus to the computer attached to the specified port. The KVM focus remains where it is.</p> <p>Example:</p> <ol style="list-style-type: none"> 1. Press [Scroll Lock] twice. 2. Press [2]. 3. Press [U], and then press [S]. 4. Press [Enter]. |
| [Scroll Lock] [Scroll Lock] [n] [K] [S] [U] [Enter] | <p>Brings the KVM, USB hub and audio focus to the computer attached to the specified port.</p> <p>Example:</p> <ol style="list-style-type: none"> 1. Press [Scroll Lock] twice. 2. Press [2]. 3. Press [K], [S], and then press [U]. 4. Press [Enter]. <p>Note: This is the same action as [Scroll Lock] [Scroll Lock] [n] [Enter]</p> |

Note: The **n** stands for the computer's Port ID number (1, 2, 3, or 4). See *Port ID Numbering*, page 19 for details. Replace the **n** with the appropriate Port ID when entering Hotkey combinations.

Auto Scanning

The CS1942DP / CS1944DP's Auto Scan feature automatically cycles the KVM focus through the computer ports at regular intervals. This allows you to monitor the computer activity without having to take the trouble of switching from port to port manually. See the table below for details.

| Hotkey | Action |
|---|--|
| [Scroll Lock] [Scroll Lock] [A] [Enter] | Invokes Auto Scan. The KVM focus cycles from port to port at 5 second intervals . Five second intervals is the Default setting. |
| [Scroll Lock] [Scroll Lock] [A] [n] [Enter] | The KVM focus cycles from port to port at n second intervals. |

- Note:**
1. The **n** stands for the number of seconds that the CS1942DP / CS1944DP should dwell on a port before moving on to the next. Replace the **n** with a number between 1 and 99 when entering this Hotkey combination.
 2. While Auto Scan Mode is in effect, ordinary keyboard and mouse functions are suspended – only Auto Scan Mode compliant keystrokes and mouse clicks can be input. You must exit Auto Scan Mode in order to regain normal control of the console.
 3. Although the video focus switches from port to port, the audio and USB focus do not switch. They stay at the port they were on when Auto Scanning started.
 4. To exit Auto Scan Mode, press the **[Esc]** key, or the **[Spacebar]**.

Hotkey Setting Mode

Hotkey Setting Mode is used to set up your CS1942DP / CS1944DP switch configuration. All operations begin with invoking Hotkey Setting Mode (HSM).

Invoking HSM

To invoke HSM do the following:

1. Press and hold down **[Num Lock]**.
2. Press and release **[-]**.
3. Release **[Num Lock]**.

Note: There is an alternate key combination to invoke HSM. See below for details.

When HSM is active, the Caps Lock, and Scroll Lock LEDs flash in succession to indicate that HSM is in effect. They stop flashing and revert to normal status when you exit HSM.

Ordinary keyboard and mouse functions are suspended – only Hotkey compliant keystrokes and mouse clicks (described in the sections that follow), can be input.

At the conclusion of some Hotkey operations, you automatically exit Hotkey mode. With some operations, you must exit manually. To exit HSM manually, press the **[Esc]** key, or the **[Spacebar]**.

Alternate HSM Invocation Keys

An alternate set of HSM invocation keys is provided in case the default set conflicts with programs running on the computers.

To switch to the alternate HSM invocation set, do the following:

1. Invoke HSM (see page 26).
2. Press and release [**H**].

The HSM invocation keys become the [**Ctrl**] key (instead of [**Num Lock**]) and the [**F12**] key (instead of [-]).

Note: This procedure is a toggle between the two methods. To revert back to the original HSM invocation keys, invoke HSM, then press and release the [**H**] key again.

Alternate Port Switching Keys

The port switching activation keys can be changed from tapping the Scroll Lock key twice ([**Scroll Lock**] [**Scroll Lock**]) to tapping the [**Ctrl**] key twice. To change the port switching activation keys, do the following:

1. Invoke HSM (see page 26).
2. Press and release [**T**].

Note: This procedure is a toggle between the two methods. To revert back to the original [**Scroll Lock**] [**Scroll Lock**] method, invoke HSM, then press and release the [**T**] key again.

Keyboard Operating Platform

The CS1942DP / CS1944DP's default port configuration is for a PC compatible keyboard operating platform. If your console uses a PC compatible keyboard and you have a Mac or Sun attached to a port, for example, you can change the port's keyboard operating platform configuration so that the PC compatible keyboard emulates the Mac or Sun keyboard. The procedure is as follows:

1. Bring the KVM focus to the port you want to set.
2. Invoke HSM (see page 26).
3. Press and release the appropriate Function key (see table below). After completing this procedure, you automatically exit HSM.

| Function Key | Operation |
|---------------------|---|
| [F1] | Sets the SPC mode so that it can work under special operating systems as a standard (104 key) keyboard. |
| [F2] | Enables Mac keyboard emulation, see page 35, for details. |
| [F3] | Enables Sun keyboard emulation, see page 36, for details. |
| [F10] | Enables Windows keyboard emulation. |

List Switch Settings

To see a listing of the current switch settings, do the following:

1. Open a text editor or word processor and place the cursor in the page window.
2. Invoke HSM (see page 26).
3. Press and release **[F4]** to display the settings.

USB Reset

If the USB loses focus and needs to be reset, do the following:

1. Invoke HSM (see page 26).
2. Press and release **[F5]**

Hotkey Beeper Control

The Beeper can be Hotkey toggled On and Off. To toggle the Beeper, do the following:

1. Invoke HSM (see page 26).
2. Press and release **[B]**.

The Beeper toggles On or Off.

Port Switching Keys

To disable the Port Switching Keys (**[Scroll Lock] [Scroll Lock] / [Ctrl] [Ctrl]**), do the following:

1. Invoke HSM (see page 26 for details).
2. Press **[X] [Enter]**.

Note: This procedure is a toggle. To enable the Port Switching keys, repeat steps 1 and 2.

Firmware Upgrade Mode

To set Firmware Upgrade Mode, do the following:

1. Invoke HSM (see page 26).
2. Key in: upgrade
3. Press **[Enter]**.

The front panel LEDs flash to indicate Firmware Upgrade Mode is in effect.

Note: To exit Firmware Upgrade Mode, you must power off the switch.

Restore Default Settings

To reset the CS1942DP / CS1944DP to its default Hotkey settings, do the following:

1. Invoke HSM (see page 26).
2. Press **[R] [Enter]**.

All Hotkey settings return to the factory default settings.

Keyboard Emulation Control

To toggle between keyboard emulation enabled and disabled, do the following:

1. Invoke HSM (see page 26).
2. Press [**N**].

Mouse Emulation Control

To toggle between mouse emulation enabled and disabled, do the following:

1. Invoke HSM (see page 26).
2. Press [**M**].

Mouse Port Switching

Mouse Port Switching allows you to use the mouse wheel button (clicked twice) to switch ports. For Mouse Port Switching to work Mouse Emulation must be enabled. To enable or disable mouse port switching, do the following:

1. Invoke HSM (see page 26).
2. Press [**W**].

Monitor Re-detection

If the monitor's display is blank, use this hotkey to re-detect the monitor's EDID. Monitor re-detection can be enabled or disabled. The default setting is disabled. To enable monitor re-detection, do the following:

1. Invoke HSM (see page 26).
2. Press [**Q**] [*n*] [**Enter**].
n is a one-digit number that represents the port number: $n=1-2$ (CS1942DP); or $n=1-4$ (CS1944DP).

This procedure is a toggle. Repeat to revert to the original setting.

Switching Mode Selection

This hotkey allows you to select an appropriate switching mode between Normal Switching Mode or Fast Switching Mode.

-
- Note:**
1. This hotkey will only be available with CS1942DP / CS1944DP using firmware version v1.1.104 or later.
 2. The function (press a port selection pushbutton twice to bring the audio focus to the computer attached to its corresponding port) will be disabled when the fast switching mode is enabled, see *Alternative Manual Port Selection Settings*, page 19.
-

To change the switching mode, do the following:

1. Invoke HSM (see page 26).
2. Press and release **[P] [n] [Enter]**. The n represents the appropriate Function key (see table below). After completing this procedure, you automatically exit HSM.

| Function Key | Operation |
|--------------|--|
| [1] | Sets the KVM to Normal Switching Mode (Default). |
| [2] | Sets the KVM to Fast Switching Mode. |

Note: The configuration of Fast Switching Mode might not work with some monitors. If your video output does not display successfully or work properly, please use the default Normal Switching Mode instead.

HSM Summary Table

After invoking HSM (see page 26), key in one of the following keys to perform the corresponding function:

| Key | Function |
|--|--|
| [F1] | Sets the keyboard and mouse to SPC mode so that it can work under special operating systems as a standard (104 key) keyboard and mouse. |
| [F2] | Enables Mac keyboard emulation. |
| [F3] | Enables Sun keyboard emulation. |
| [F4] | Print the switch's current settings via a text editor or word processor. |
| [F5] | Performs a USB keyboard and mouse reset. |
| [F6] [n][n] [Enter] | Sets the keyboard language layout. Where nn is a two digit number that represents the keyboard language code (US English: 33, French: 08, German: 09, Japanese: 15). |
| [F10] | Enables Windows keyboard emulation. |
| [B] | Toggles the beeper On and Off. |
| [E] | Toggles the Power-on-Detection function on/off. |
| [H] | Toggles between the default and alternate HSM invocation keys. |
| [M] | Toggles between mouse emulation enable and disable. |
| [N] | Toggles between keyboard emulation enable and disable. |
| [R] [Enter] | Resets the Hotkey settings to their default status. |
| [T] | Toggles between the default ([Scroll Lock] [Scroll Lock]) and alternate ([Ctrl] [Ctrl]) Port Switching keys. |
| [u] [p] [g] [r] [a] [d] [e] [Enter] | Invokes Firmware Upgrade Mode. |
| [W] | Toggles between Mouse Port Switching enabled and disabled. When enabled, click the mouse wheel twice to switch ports. Mouse emulation must be enabled. |
| [X] [Enter] | Enables/Disables the Port Switching keys. |

| Key | Function |
|---------------------|---|
| [P] [n] [Enter] | Sets the KVM switching mode. <ul style="list-style-type: none">◆ n = 1, sets the KVM to Normal Switching Mode.◆ n = 2, sets the KVM to Fast Switching Mode. Note: This hotkey will only be available with CS1942DP / CS1944DP using firmware version v1.1.104 or later. |
| [Esc] or [Spacebar] | Quits and exits the setting mode. |
| [Q] [n] [Enter] | Enables/Disables monitor re-detection on port [n]. |
| [S] | Alternative Manual Port Selection Settings |









This Page Intentionally Left Blank

Chapter 5

Keyboard Emulation

Mac Keyboard








The PC compatible (101/104 key) keyboard can emulate the functions of the Mac keyboard. The emulation mappings are listed in the table below.

| PC Keyboard | Mac Keyboard |
|--|---|
| [Shift] | Shift |
| [Ctrl] | Ctrl |
|  |  |
| [Ctrl] [1] |  |
| [Ctrl] [2] |  |
| [Ctrl] [3] |  |
| [Ctrl] [4] |  |
| [Alt] | Alt |
| [Print Screen] | F13 |
| [Scroll Lock] | F14 |
|  | = |
| [Enter] | Return |
| [Backspace] | Delete |
| [Insert] | Help |
| [Ctrl]  | F15 |

Note: When using key combinations, press and release the first key (Ctrl), then press and release the activation key.

Sun Keyboard

The PC compatible (101/104 key) keyboard can emulate the functions of the Sun keyboard when the control key [Ctrl] is used in conjunction with other keys. The corresponding functions are shown in the table below.

| PC Keyboard | Sun Keyboard |
|---|---|
| [Ctrl] [T] | Stop |
| [Ctrl] [F2] | Again |
| [Ctrl] [F3] | Props |
| [Ctrl] [F4] | Undo |
| [Ctrl] [F5] | Front |
| [Ctrl] [F6] | Copy |
| [Ctrl] [F7] | Open |
| [Ctrl] [F8] | Paste |
| [Ctrl] [F9] | Find |
| [Ctrl] [F10] | Cut |
| [Ctrl] [1] |  |
| [Ctrl] [2] |  |
| [Ctrl] [3] |  |
| [Ctrl] [4] |  |
| [Ctrl] [H] | Help |
|  | Compose |
|  |  |

Note: When using key combinations, press and release the first key (Ctrl), then press and release the activation key.

Chapter 6

The Firmware Upgrade Utility

The Windows-based Firmware Upgrade Utility (FWUpgrade.exe) provides a smooth, automated process for upgrading the CS1942DP / CS1944DP's firmware.

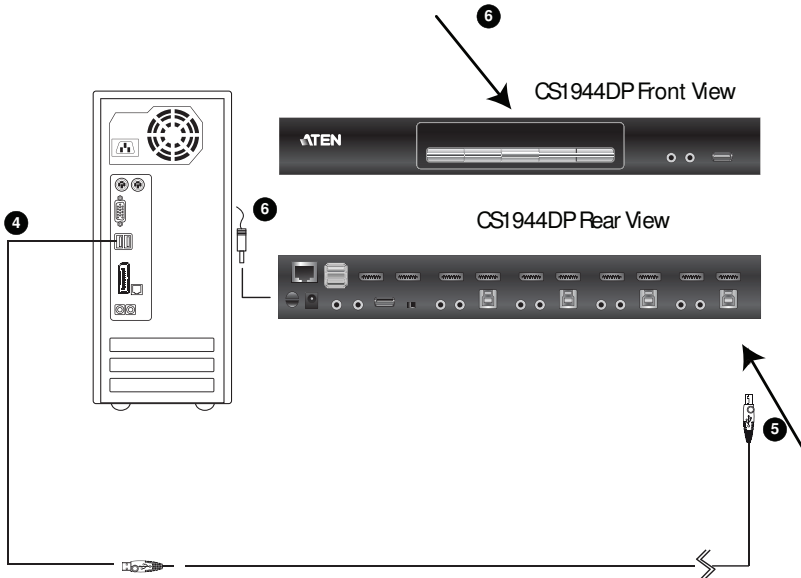
The Utility comes as part of a Firmware Upgrade Package that is specific for each device. New firmware upgrade packages are posted on our website as new firmware revisions become available. Check the website regularly to find the latest packages and information relating to them:

<http://www.aten.com/global/en/support-and-downloads/downloads/>

Before You Begin

To prepare for the firmware upgrade, do the following:

1. From a computer that is not part of your KVM installation, go to the ATEN Support & Download site and choose the model name that relates to your device (CS1942DP / CS1944DP) to get a list of available Firmware Upgrade Packages.
2. Choose the Firmware Upgrade Package you want to install (usually the most recent), and download it to your computer.
3. Unzip the downloaded firmware upgrade package.
4. Disconnect the CS1942DP / CS1944DP from your KVM installation and power it off. Connect the USB cable's USB Type-A connector to a USB port on your computer.



5. At the other end of the USB cable, connect the USB Type-B connector to the Type-B USB port in the Port 1 KVM section.

Note: The USB cable's USB Type B connector can be connected to any KVM port section, but the Port Selection pushbutton in Step 5, below, must be Port 1.

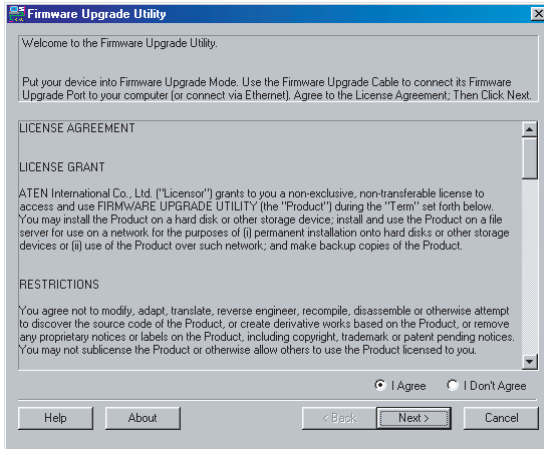
6. Press and hold the Mode pushbutton. While holding the button, connect the power adapter to the CS1942DP / CS1944DP to enter Firmware Upgrade Mode. The front panel LEDs flash together to indicate Firmware Upgrade Mode is in effect.

Starting the Upgrade

To upgrade your firmware:

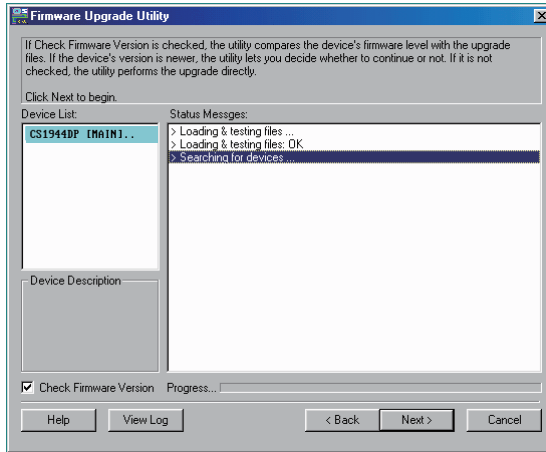
1. Run the downloaded Firmware Upgrade Package file – either by double clicking the file icon, or by opening a command line and entering the full path to it.

The *Firmware Upgrade Utility* Welcome screen appears:



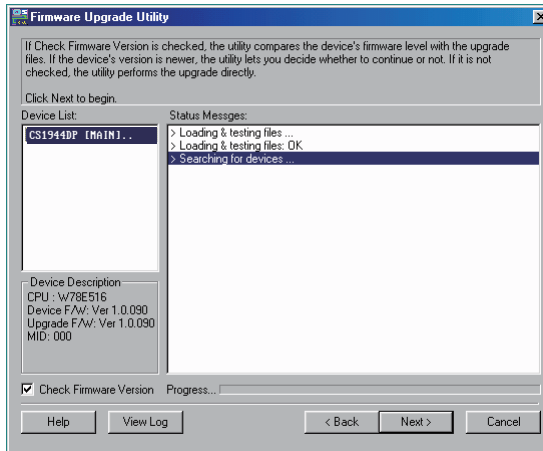
Note: The screens shown in this section are for reference only. The wording and layout of the actual screens put up by the Firmware Upgrade Utility may vary slightly from these examples.

2. Read the License Agreement (enable the *I Agree* radio button).
3. Click **Next** to continue. The Firmware Upgrade Utility main screen appears:

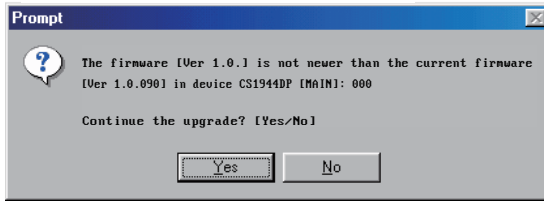


The Utility inspects your installation. All the devices capable of being upgraded by the package are listed in the *Device List* panel.

- As you select a device in the list, its description appears in the Device Description panel.



5. After you have made your device selection(s), Click **Next** to perform the upgrade.



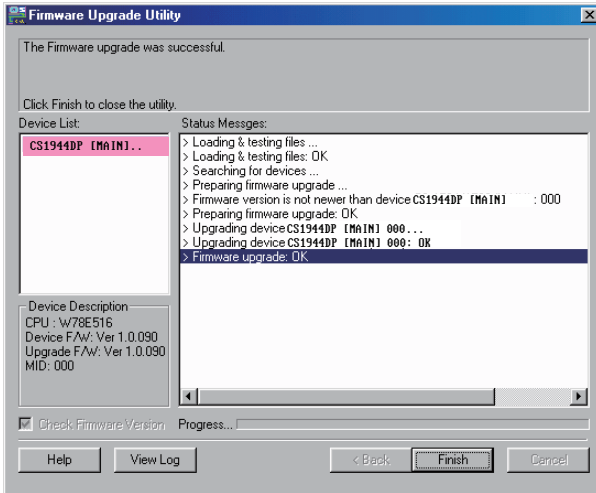
If you enabled *Check Firmware Version*, the Utility compares the device's firmware level with that of the upgrade files. If it finds that the device's version is higher than the upgrade version, it brings up a dialog box informing you of the situation and gives you the option to Continue or Cancel.

If you didn't enable *Check Firmware Version*, the Utility installs the upgrade files without checking whether they are a higher level, or not.

As the Upgrade proceeds, status messages appear in the Status Messages panel, and the progress toward completion is shown on the *Progress* bar.

Upgrade Succeeded

After the upgrade has completed, a screen appears to inform you that the procedure was successful:



Click **Finish** to close the Firmware Upgrade Utility.

After a successful completion, the switches exit Firmware Upgrade Mode, and reset themselves.

If you have a DCC mode installation be sure to reconnect the cable connected to the DCC port, and set the DCC switch back to *Client* on the appropriate switch (see *Quad-Display (DCC Mode)*, page 14).

Upgrade Failed

If the *Upgrade Succeeded* screen doesn't appear, it means that the upgrade failed to complete successfully, in which case you should do the following:

1. Power off the CS1942DP / CS1944DP by removing the power jack.
2. Invoke Firmware Upgrade Mode by holding down the *Mode Selection* pushbutton on the front panel (see *mode selection pushbutton*, page 6) and power on the CS1942DP / CS1944DP. The orange LEDs flash together.
3. Do the firmware upgrade procedure again.

This Page Intentionally Left Blank

Safety Instructions

- ◆ Read all of these instructions. Save them for future reference.
- ◆ This device is for indoor use only.
- ◆ Follow all warnings and instructions marked on the device.
- ◆ Do not place the device on any unstable surface (cart, stand, table, etc.). If the device falls, serious damage will result.
- ◆ Do not use the device near water.
- ◆ Do not place the device near, or over, radiators or heat registers.
- ◆ The device cabinet is provided with slots and openings to allow for adequate ventilation. To ensure reliable operation, and to protect against overheating, these openings must never be blocked or covered.
- ◆ The device should never be placed on a soft surface (bed, sofa, rug, etc.) as this will block its ventilation openings. Likewise, the device should not be placed in a built in enclosure unless adequate ventilation has been provided.
- ◆ Never spill liquid of any kind on the device.
- ◆ Unplug the device from the wall outlet before cleaning. Do not use liquid or aerosol cleaners. Use a damp cloth for cleaning.
- ◆ The device should be operated from the type of power source indicated on the marking label. If you are not sure of the type of power available, consult your dealer or local power company.
- ◆ Avoid circuit overloads. Before connecting equipment to a circuit, know the power supply's limit and never exceed it. Always review the electrical specifications of a circuit to ensure that you are not creating a dangerous condition or that one doesn't already exist. Circuit overloads can cause a fire and destroy equipment.
- ◆ To prevent damage to your installation, it is important that all devices are properly grounded.
- ◆ Do not allow anything to rest on the power cord or cables. Route the power cord and cables so that they cannot be stepped on or tripped over.
- ◆ Position system cables and power cables carefully; Be sure that nothing rests on any cables.

- ◆ Never push objects of any kind into or through cabinet slots. They may touch dangerous voltage points or short out parts resulting in a risk of fire or electrical shock.
- ◆ Do not attempt to service the device yourself. Refer all servicing to qualified service personnel.
- ◆ If the following conditions occur, unplug the device from the wall outlet and bring it to qualified service personnel for repair.
 - ◆ The power cord or plug has become damaged or frayed.
 - ◆ Liquid has been spilled into the device.
 - ◆ The device has been exposed to rain or water.
 - ◆ The device has been dropped, or the cabinet has been damaged.
 - ◆ The device exhibits a distinct change in performance, indicating a need for service.
 - ◆ The device does not operate normally when the operating instructions are followed.
- ◆ Only adjust those controls that are covered in the operating instructions. Improper adjustment of other controls may result in damage that will require extensive work by a qualified technician to repair.
- ◆ Do not connect the RJ-11 connector marked “UPGRADE” to a public telecommunication network.

Technical Support

Technical support is available both by email and online (with a browser over the web):

International

- ◆ For online technical support – including troubleshooting, documentation, and software updates: <http://support.aten.com>
- ◆ For telephone support, see *Telephone Support*, page iv:

North America

| | | |
|--------------------------|--|---|
| Email Support | | support@aten-usa.com |
| Online Technical Support | Troubleshooting Documentation Software Updates | http://www.aten-usa.com/support |
| Telephone Support | | 1-888-999-ATEN ext 4988 1-949-428-1111 |

When you contact us, please have the following information ready beforehand:

- ◆ Product model number, serial number, and date of purchase.
- ◆ Your computer configuration, including operating system, revision level, expansion cards, and software.
- ◆ Any error messages displayed at the time the error occurred.
- ◆ The sequence of operations that led up to the error.
- ◆ Any other information you feel may be of help.

Specifications

| Function | | CS1942DP | CS1944DP | |
|----------------------|------------------------|---|---|--|
| Computer Connections | Direct | 2 | 4 | |
| Port Selection | | Pushbuttons, Hotkeys, RS-232 Commands, Mouse* | | |
| Connectors | Console Ports | Keyboard | 1 x USB Type-A Female | |
| | | Mouse | 1 x USB Type-A Female | |
| | | Video | 2 x DisplayPort Female (Black) | |
| | | Speakers | 2 x 3.5mm Audio Jack Female (Green; 1 x front, 1 x rear) | |
| | | Microphone | 2 x 3.5mm Audio Jack Female (Pink; 1 x front, 1 x rear) | |
| | KVM Ports | KB / Mouse | 2 x USB 3.1 Gen 1 Type-B Female (Blue) | 4 x USB 3.1 Gen 1 Type-B Female (Blue) |
| | | Video | 4 x DisplayPort Female (Black) | 8 x DisplayPort Female (Black) |
| | | Speakers | 2 x 3.5mm Audio Jack Female (Green) | 4 x 3.5mm Audio Jack Female (Green) |
| | | Microphone | 2 x 3.5mm Audio Jack Female (Pink) | 4x 3.5mm Audio Jack Female (Pink) |
| | DCC port | | 1 x RJ-45 Female | |
| | Power | | 1 x DC Jack | |
| | USB Hub | | 2 x USB 3.1 Gen 1 Type-A Female (Blue; 1 x front; 1 x rear) | |
| LED | KVM | 3 (Orange) | 5 (Orange) | |
| | Audio | 3 (Green) | 5 (Green) | |
| | USB Link | 3 (Green) | 5 (Green) | |
| Switches | Selected | 3 x Pushbutton | 5 x Pushbutton | |
| | Station Selection | 1 x Slide switch | 1 x Slide switch | |
| Emulation | KB / Mouse | USB | | |
| Video | | Up to 4096 x 2160 @ 60 Hz, 2560 x 1440 @ 144 Hz | | |
| Scan Interval | | 1–99 secs. (default: 5 seconds) | | |
| Power Consumption | | DC12V:3.48W:73BTU | DC12V:6.125W:85BTU | |
| Environment | Operating Temp. | 0–50°C | | |
| | Storage Temp. | -20–60°C | | |
| | Humidity | 0–80% RH, Non-condensing | | |
| Physical Properties | Housing | Metal | | |
| | Weight | 1.54 kg (3.39 lb) | 1.51 kg (3.33 lb) | |
| | Dimensions (L x W x H) | 33.50 x 15.66 x 4.40 cm (13.19 x 6.17 x 1.73 in) | | |

* Port switching only works with 3-key USB mouse wheel in emulation mode.

Troubleshooting

Overview

Operation problems can be due to a variety of causes. The first step in solving them is to make sure that all cables are securely attached and seated completely in their sockets.

In addition, updating the product's firmware may solve problems that have been discovered and resolved since the prior version was released. If your product is not running the latest firmware version, we strongly recommend that you upgrade. See Chapter 6, *The Firmware Upgrade Utility*, for upgrade details.

| Symptom | Possible Cause | Action |
|---|---|--|
| Mouse and/or Keyboard not responding. | Improper mouse and/or keyboard reset. | Unplug the cable(s) from the console port(s), then plug it/them back in. |
| | CS1942DP / CS1944DP needs to be reset. | Power off all devices on the installation (see safety note, top of page 11); power off the CS1942DP / CS1944DP; wait five seconds; then power up |
| USB devices not responding. | USB ports need to reset. | Unplug the device's USB cable from the USB port on the CS1942DP / CS1944DP's rear panel, then plug it back in. |
| | PC or OS does not support USB 2.0/3.0. | The CS1942DP / CS1944DP has a built-in USB 3.0 hub, so will not support PCs or OS that do not support USB 2.0/3.0. For an OS that does not support USB 2.0, keyboard and mouse functions can be reset using the [F1] Hotkey function. See page 32. |
| Device not recognized (Windows). | Windows timing problem. | <ol style="list-style-type: none"> 1. Unplug the KVM cable from the computer's USB port. 2. Go into Windows' <i>System Settings</i> and remove the <i>Unknown Device</i> entry. 3. Plug the KVM cable back in. Windows will now recognize the device. |
| Front Panel Pushbuttons not responding when pushed. | The daisy chain switch located on the back of the CS1942DP / CS1944DP is set to Client. | Make sure the daisy chain switch located on the rear of the switch is set to <i>Host</i> . You should only set the daisy chain switch to <i>Client</i> when connecting two units in a Quad-Display installation, see <i>Quad-Display (DCC Mode)</i> , page 14. |

| Symptom | Possible Cause | Action |
|--|--|--|
| The Front Panel Pushbutton Combo key doesn't work after its set. | Some Hotkeys are not supported as front panel pushbutton combo keys. | The [X] [Enter] , [R] [Enter] , and [upgrade] [Enter] Hotkeys can not be set as a front panel pushbutton combo key. Select a different Hotkey to use. |

ATEN Standard Warranty Policy

Limited Hardware Warranty

ATEN warrants its hardware in the country of purchase against flaws in materials and workmanship for a Warranty Period of two [2] years (warranty period may vary in certain regions/countries) commencing on the date of original purchase. This warranty period includes the [LCD panel of ATEN LCD KVM switches](#). For UPS products, the device warranty is two [2] years but battery is one [1] year. Select products are warranted for an additional year (see [A+ Warranty](#) for further details). Cables and accessories are not covered by the Standard Warranty.

What is covered by the Limited Hardware Warranty

ATEN will provide a repair service, without charge, during the Warranty Period. If a product is defective, ATEN will, at its discretion, have the option to (1) repair said product with new or repaired components, or (2) replace the entire product with an identical product or with a similar product which fulfills the same function as the defective product. Replaced products assume the warranty of the original product for the remaining period or a period of 90 days, whichever is longer. When the products or components are replaced, the replacing articles shall become customer property and the replaced articles shall become the property of ATEN.

To learn more about our warranty policies, please visit our website:
<http://www.aten.com/global/en/legal/policies/warranty-policy/>

Released: 2024-01-08

© Copyright 2024 ATEN® International Co., Ltd.

ATEN and the ATEN logo are registered trademarks of ATEN International Co., Ltd. All rights reserved.
All other brand names and trademarks are the registered property of their respective owners.

ATEN International Co., Ltd., 3F, No. 125, Sec. 2, Datung Rd., Sijhih District, New Taipei City 221, Taiwan
Phone: 886-2-8692-6789 Fax: 886-2-8692-6767 TECHNICAL SUPPORT CENTER: 886-2-8692-6959