

8/16/32/48-Port Serial Console Server

SN0108A / SN0116A / SN0132 / SN0148

- The SN Series of serial console servers integrates cutting edge technology to provide secure serial device access and management for data centers. Available in 8-, 16-, 32- and 48-port models with dual AC and dual DC options, the serial console server offers both in-band and out-of-band remote serial console access to servers and network devices via a direct Telnet/SSH client and applet viewer. SN serial console servers work in tandem with ATEN's Power Over the NET™ remote power management systems. Both can be utilized through ATEN's CC2000 software to provide centralized serial device access and integrated power management. With their comprehensive features, the SN Series helps to maximize IT productivity, increase scalability and reduce operational costs with easy remote management of serial devices.

ATEN serial console servers are used to connect serial devices to an Ethernet network to allow access and control of demanding applications that manage industrial control, data acquisition, environment monitoring, remote facility operations and equipment. The SN Series offer multiple operational modes that include Real COM Port, TCP Server/Client, UDP Server/Client, Serial Tunnel and Virtual Modem. Our serial console server helps transform the capabilities of serial devices by taking advantage of network access to configure and manage control of these devices from anywhere in the world via the Internet.

The SN Series of serial console servers is a secure remote access and control solution for any serial device. Access rights and privileges can be applied to 8/16/32/48 individual serial ports while consolidated password authentication simplifies management. For security, data encryption is provided to ensure information and control is always protected. Logging and alerting of system events helps to quickly resolve issues and mitigate risks. Enhanced security functions are integrated to meet and ensure the compliance of internal security mandates. The Serial Console Server's ease of use, accessibility and manageability of serial devices and servers enables a business to quickly integrate remote control of a complete line of serial devices to consolidate operations and run facilities more effectively.

SN0148 Front View



SN0148 Rear View



SN0148D Rear View



Features

System Accessibility and Availability

- Secure in-band and out-of-band remote serial console access
- In-band Ethernet access of serial devices
- Browser access with an intuitive GUI
- Terminal-based access with a menu-driven UI
- Out-of-band access via dial-up modem
- Modem dial-in/dial-back/dial-out access
- Front USB ports for storage or USB-based PC cards
- Laptop USB Console (LUC) port for local console access via laptop
- Dual Ethernet ports allow fail control or dual IP address access
- Dual power supply

Serial Console Management

- Convenient and simple serial device access via browser or Telnet/SSH client
- Port access via Telnet/SSH client and third-party client such as PuTTY
- Direct port access from Telnet client – bypasses SN login
- Easy port access via the SN Web GUI applet viewer
- Selectable Telnet or SSH client
- Selectable ActiveX or Java serial viewer
- Comprehensive viewer functions – copy/paste, logging, data import, macros, broadcasting and message board
- Sun Solaris ready – Sun “break-safe”
- Alert Strings
- Command filter – administrators can restrict users to execute only pre-defined commands
- Data buffering
- Multiple users can simultaneously access the same port – up to 16 connections per port
- Modes for simultaneous access – Exclusive/Occupy/Share
- Integrates with Power Over the NET™ products for power management of each port

Security

- SSH and SSL (TLS v1.0 / TLS v1.1 / TLS v1.2) support
- Supports secure login from browser with TLS 1.2 data encryption and RSA 2048-bit certificates
- Configurable user permissions for port access
- Configurable group permissions for port access
- Local and remote authentication and logging
- Third-party authentication via RADIUS, TACACS+, LDAP/AD and Kerberos
- IP and MAC filtering
- High-Grade Security – supports FIPS 140-2 level 1 security standards that use an embedded FIPS 140-2 certified OpenSSL cryptographic module (Certificate #1747, #2398, #2473)

System Management

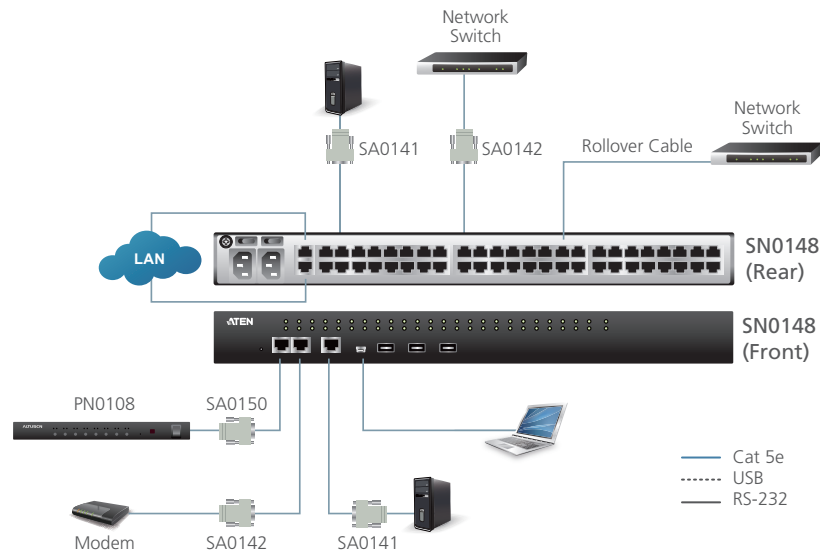
- System configuration via web browser, Telnet/SSH client and local console
- System log and event logging
- Comprehensive logging and event notification
- ATEN Log server and Syslog server
- SNMP agent
- Event notification – via SMTP email, SNMP Trap and SMS (to mobile devices)
- Backup and restore of system configuration
- Firmware upgradeable
- Multi-browser support – Internet Explorer, Chrome, Firefox, Safari, Opera and Mozilla
- Customizable global time zone
- NTP for time server synchronization
- DHCP for dynamic IP address assignment
- IPv6 support
- Integrates with CC2000 software for centralized data center management

Serial Device Management

- Serial operating modes – Real COM, TCP Server, TCP Client, UDP, Serial Tunnel and Virtual Modem
- 128-bit/256-bit SSL encryption (TLS v1.0 / TLS v1.1 / TLS v1.2) for Real COM, TCP Server, TCP Client, Serial Tunnel and Virtual Modem
- Real COM driver for Windows 2000 or higher and Windows Server 2003/2008
- Real TTY driver for Linux
- Fixed TTY driver for UNIX

Language

- Multi-language web-based GUI – available in German, Japanese, Korean, Russian, Simplified Chinese and Traditional Chinese



Specifications

Function	SN0108A	SN0116A	SN0132	SN0148
Connection	8	16	32	48
Connectors				
Serial	8 x RJ-45 (F)	16 x RJ-45 (F)	32 x RJ-45 (F)	48 x RJ-45 (F)
LAN Ports	2 x RJ-45 (F)			
Power	AC Model (SN0108A): 2 x IEC 60320 / C14 DC Model (SN0108AD): 2 x 2-pin Terminal Block (Green)	AC Model (SN0116A): 2 x IEC 60320 / C14 DC Model (SN0116AD): 2 x 2-pin Terminal Block (Green)	AC Model (SN0132): 2 x IEC 60320 / C14 DC Model (SN0132D): 2 x 2-pin Terminal Block (Green)	AC Model (SN0148): 2 x IEC 60320 / C14 DC Model (SN0148D): 2 x 2-pin Terminal Block (Green)
PON	1 x RJ-45 (F)			
Modem	1 x RJ-45 (F)			
USB Port	3 x USB Type A (F)			
Laptop USB Console (LUC) Port	1 x Mini USB			
Local Console	1 x RJ-45 (F)			
Switches				
Reset	1 x Recessed Pushbutton			
Power	2 x Rocker Switch			
LEDs				
Serial	8 (Green)	16 (Green)	32 (Green)	48 (Green)
10/100/1000 Mbps	2 (Red / Orange / Green)			
Power	2 (Blue)			
Maximum Input Power Rating	AC Model (SN0108A): 100 - 240 VAC, 50 / 60 Hz, 1 A DC Model (SN0108AD): 36 - 48 VDC, 1.6 A	AC Model (SN0116A): 100 - 240 VAC, 50 / 60 Hz, 1 A DC Model (SN0116AD): 36 - 48 VDC, 1.6 A	AC Model (SN0132): 100 - 240 VAC, 50 / 60 Hz, 1.8 A DC Model (SN0132D): 36 - 48 VDC, 1.6 A	AC Model (SN0148): 100 - 240 VAC, 50 / 60 Hz, 1.8 A DC Model (SN0148D): 36 - 48 VDC, 1.6 A
Power Consumption	AC Model (SN0108A): 110 VAC, 22.1 W; 220 VAC, 21.8 W DC Model (SN0108AD): 48 VDC, 20 W	AC Model (SN0116A): 110 VAC, 22.9 W; 220 VAC, 22.6 W DC Model (SN0116AD): 48 VDC, 22 W	AC Model (SN0132): 120 VAC, 35 W; 230 VAC, 37 W DC Model (SN0132D): 48 VDC, 36 W	AC Model (SN0148): 120 VAC, 42 W; 230 VAC, 43 W DC Model (SN0148D): 48 VDC, 42 W
Environmental				
Operating Temperature	0° to 40° C			
Storage Temperature	-20° to 60° C			
Humidity	0 - 80% RH, Non-condensing			
Physical Properties				
Housing	Metal			
Weight	4.35 kg	4.38 kg	4.84 kg	4.92 kg
Dimensions (L x W x H)	43.72 x 32.98 x 4.40 cm	43.72 x 32.98 x 4.40 cm	43.72 x 32.77 x 4.40 cm	43.72 x 32.77 x 4.40 cm

Product information is subject to change without prior notice.

ATEN International Co., Ltd.

3F., No.125, Sec. 2, Datong Rd., Sijhih District., New Taipei City 221, Taiwan
 Phone: 886-2-8692-6789 Fax: 886-2-8692-6767
 www.aten.com E-mail: marketing@aten.com

Publish Date: 09/2018 V7.0



© Copyright 2018 ATEN® International Co., Ltd.
 ATEN and the ATEN logo are trademarks of ATEN International Co., Ltd.
 All rights reserved. All other trademarks are the property of their respective owners.