

VGA/DVI/HDMI EDID Emulator

VC010 / VC060 / VC080

- The ATEN VC010 / VC060 / VC080 is a VGA/DVI/HDMI EDID Emulator, which is designed to emulate and store the EDID of a video display, providing constant and reliable EDID data for the a VGA/DVI/HDMI source device to efficiently optimize video resolution.

The ATEN VGA/DVI/HDMI EDID Emulator is a convenient tool that ensures smooth viewing experience for any video installation. The EDID Emulator provides three flexible methods for selecting and switching between EDID Modes: Default Mode, Programming Mode, and Learning Mode. It comes with an easy-to-use EDID Wizard that allows users to quickly view, store and manage EDID settings.

VC010



VC060



VC080



Features

- Superior video quality – HDTV resolutions of 480i, 480p, 720i, 720p, 1080i, 1080p (1920 x 1080); VGA, SVGA, XGA, SXGA, UXGA and WUXGA (1920 x 1200)
- **EDID Wizard** – allows a user an easy way to manage EDID settings
- Consumer Electronics Control (CEC) allows interconnected HDMI devices to communicate and respond to one remote control (VC080)
- **EDID mode selection** – Default, Learning , Programming
- HDMI (3D, Deep Color), HDCP compatible (VC080)
- Supports Dolby True HD and DTS HD Master Audio (VC080)
- Automatically manages EDID communication between connected devices
- Signaling rates up to 2.25 Gbits in support of 1080p display
- LED indication of video source devices
- Supports wide screen
- Supports hot-plugging
- Non-Powered*

*If the video source is not receiving enough power an external power cord should be connected.

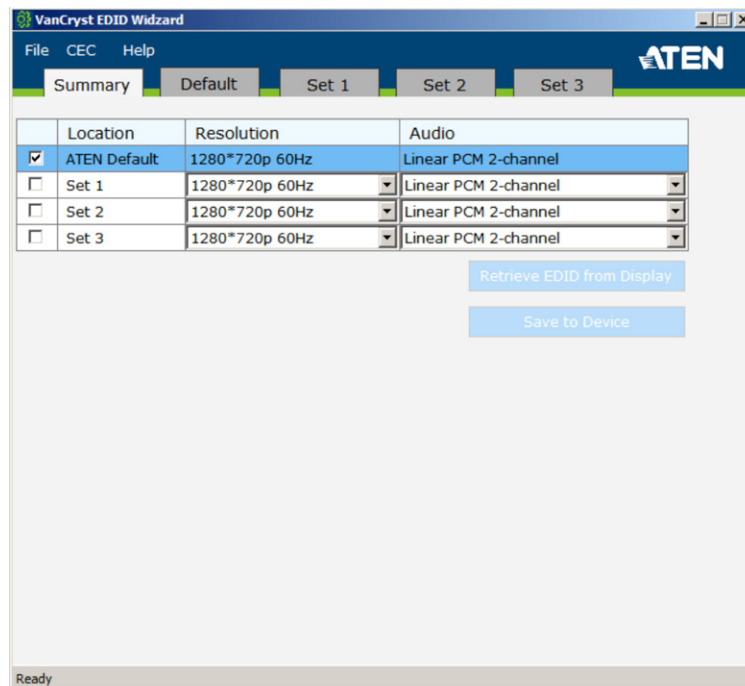
Highlights

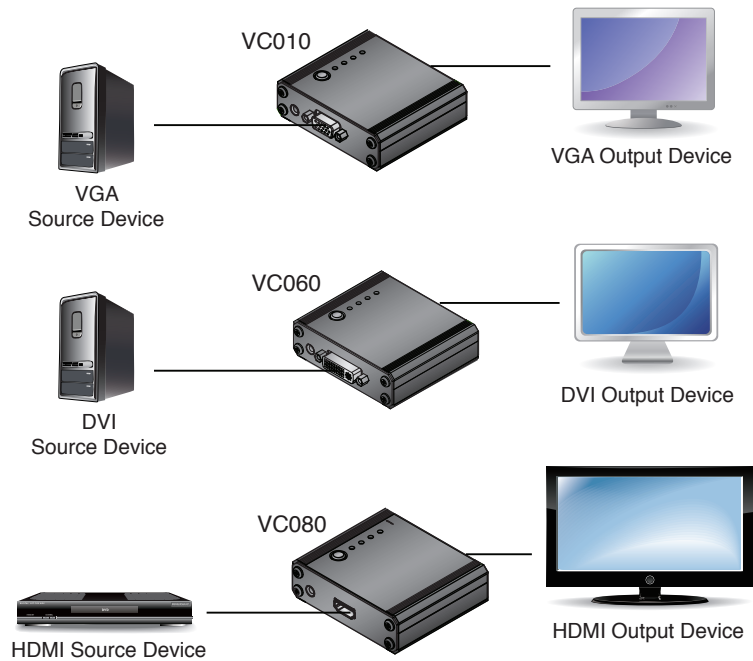
Intelligent DDC Channel Switch

The previous Emulator only supports EDID signal bi-directional communication – it cannot transmit HDCP over a single channel. With the Intelligent DDC Channel Switch feature, the HDCP bypass or EDID mode can be selected automatically (VC080).

EDID Wizard

The EDID Wizard application can be downloaded from the ATEN website. The user-friendly GUI can be used to view, configure and store EDID settings.





Specifications

Function		VC010	VC060	VC080
Connectors	Video In	1 x HDB-15 Female (Blue)	1 x DVI-I Female (White)	1 x HDMI Type A Female (Black)
	Video Out	1 x HDB-15 Female (Blue)	1 x DVI-I Female (White)	1 x HDMI Type A Female (Black)
	RS-232 Port		1 x mini jack (Black)	
	Power		1 x DC Jack	
Switch	Learn/Select		1 x Pushbutton	
LED	EDID Set		4 (Green)	
Video			1920 x 1200; 1080p	
Power Consumption			DC5V, 0.15W	
Environment	Operating Temp.		0°C - 50°C	
	Storage Temp.		-20°C - 60°C	
	Humidity		0 – 80% RH, Non-condensing	
Physical Properties	Housing		Metal	
	Weight	0.15 kg	0.15 kg	0.15 kg
	Dimension (L x W x H)	7.90 x 7.76 x 2.45 cm	7.90 x 7.86 x 2.45 cm	7.90 x 7.16 x 2.45 cm

Product information is subject to change without prior notice.

ATEN International Co., Ltd.

3F., No.125, Sec. 2, Datong Rd., Sijhih District., New Taipei City 221, Taiwan
 Phone: 886-2-8692-6789 Fax: 886-2-8692-6767
 www.aten.com E-mail: marketing@aten.com

Publish Date: 04/2018 V4.0



© Copyright 2018 ATEN® International Co., Ltd.
 ATEN and the ATEN logo are trademarks of ATEN International Co., Ltd.
 All rights reserved. All other trademarks are the property of their respective owners.